

PLUMBING FIXTURE SCHEDULE									
MARK	FIXTURE	MANUFACTURER/ SUPPLIER	MODEL No.	MATERIAL	SIZE	FAUCET AND DRAIN	TRAP	SUPPLIES AND STOPS	REMARKS
P-1	WATER CLOSET	AMERICAN STANDARD	#2234.001	VITROUS CHINA	ELONG. BOWL	-----	-----	-----	SENSOR OPERATED FLUSH VALVE - AMERICAN STANDARD ELECTRONIC AC POWER
P-1-ALT	TANK TYPE WATER CLOSET	AMERICAN STANDARD	#2335.100	VITROUS CHINA	ELONG. BOWL	-----	-----	ANGLE STOPS	PRESSURE-ASSISTED TANK TYPE
P-1A	WATER CLOSET (HC)	AMERICAN STANDARD	#3043.001	VITROUS CHINA	ELONG. BOWL	-----	-----	-----	SENSOR OPERATED FLUSH VALVE - AMERICAN STANDARD ELECTRONIC AC POWER
P-1A-ALT	TANK TYPE WATER CLOSET (HC)	AMERICAN STANDARD	#2467.016	VITROUS CHINA	ELONG. BOWL	-----	-----	ANGLE STOPS	PRESSURE-ASSISTED TANK TYPE TRIP LEVER ON OPEN SIDE OF STALL (#142.800 TANK FOR RH TRIP LEVER)
P-2	URINAL	AMERICAN STANDARD	#8590.001 0.5 GPF	VITROUS CHINA	19"x28"	-----	-----	-----	SLOAN 186-0.5 ROYAL R55 AC POWER FLUSH VALVE
P-3	LAVATORY	AMERICAN STANDARD	#0124.024	VITROUS CHINA	20"x18"	#7385.030 WITH #2411.015.002 6500 DRNIN	17 GA.	ANGLE STOPS	-----
P-3A	LAVATORY (HC)	AMERICAN STANDARD	#0124.024	VITROUS CHINA	20"x18"	#7385.030 WITH #2411.015.002 6500 DRNIN 7723.018 OFFSET	17 GA.	ANGLE STOPS	TRUEBRO 102-EZ LAVGUARD
P-4	TWO LEVEL ELECTRIC WATER COOLER	GRANGER ELKAY	EZSTLBC	STAIN. STEEL	38"x19"	-----	8.0 GPH	WHEEL HAND STOP	MOUNT ONE UNIT AT HANDICAP HEIGHT
P-4A	SINGLE WATER COOLER	GRANGER ELKAY	EZSB	STAIN. STEEL	19"x19"	-----	8.0 GPH	WHEEL HAND STOP	MOUNT AT HANDICAP HEIGHT
P-5	MIXING FAUCET	AMERICAN STANDARD	#8380.243	CAST BRASS	-----	-----	-----	VACUUM BREAKER LEVER HANDLES	-----
P-6	WALL HYDRANT	ZURN	Z-1310	BRONZE	-----	-----	-----	VACUUM BREAKER KEY CONTROL	FREEZEPROOF
P-6A	WALL HYDRANT	ZURN	Z-1325	BRONZE	-----	-----	-----	VACUUM BREAKER KEY CONTROL	HW & CW, FREEZEPROOF
P-7	CAN WASH FAUCET	T & S	#B-0668-BSTR	CHROME PLATED	-----	-----	-----	VACUUM BREAKER INTEGRAL STOPS & WALL BRACKET WITH CHECK VALVES	-----
P-8	FLOOR DRAIN	ZURN	ZB-415	CAST BRONZE STRAINER	4"	-----	DEEP SEAL TRAP	BACKWATER VALVE	-----
P-8A	TRENCH DRAIN	ABT, INC.	POLYDRAIN CHANNEL #100	-----	-----	-----	DEEP SEAL TRAP	-----	No. 2502 DUCTILE IRON GRATE W/825.44 VERTICAL OUTLET & CLOSED END PLATES
P-8B	TRENCH DRAIN	ABT, INC.	POLYDRAIN CHANNEL #90	-----	-----	-----	DEEP SEAL TRAP	-----	No. 2502 DUCTILE IRON GRATE W/825.44 VERTICAL OUTLET & CLOSED END PLATES
P-9	FLOOR CLEAN-OUT	SIOUX CHIEF	834-4PNR	PVC WITH NICKEL/BRONZE TOP	4"	-----	-----	-----	WITH BODY FLANGE REFER TO DETAIL ON SHEET P6.01
P-9A	TWO WAY CLEAN-OUT IN CONCRETE	SIOUX CHIEF	834-4PNR	PVC WITH NICKEL/BRONZE TOP	4"	-----	-----	-----	WITH BODY FLANGE, USE IN CONCRETE REFER TO DETAIL ON SHEET P6.01
P-9B	TWO-WAY CLEAN-OUT	JOSAM	58900 SERIES	COATED CAST IRON WITH NICKEL/BRONZE PLUG	4"	-----	-----	-----	EXTERIOR WHEN IN ASPHALT, SEE DETAIL ON SHEET P6.01, WITH SIGMA 6" VISCULUS OR EQUIVALENT, MUST MEET MIN. LOAD RATING AND IS CAST IRON
P-10	MEAT PREP SINK	JOHN BOOS	3PB244-1024-FL	TYPE 300 STAINLESS STEEL	30"x124"	(1) B-3952 LEVER WASTE DRAIN T&S B 1128 FAUCET 8" CC, 12" SPOUT	-----	VACUUM BREAKER AND ANGLE STOPS	(3) 699051253 STANDOFF BRACKETS
P-11	PRODUCE PREP SINK	JOHN BOOS	3PB244-2024-FL-1	TYPE 300 STAINLESS STEEL	30"x124"	(1) B-3952 LEVER WASTE DRAIN T&S B 1128 FAUCET 8" CC, 12" SPOUT (1) T&S B 0156 ADD-A-FAUCET (1) T&S B 2278 FREEWASH W/VB	-----	VACUUM BREAKER AND ANGLE STOPS	(3) 699051253 STANDOFF BRACKETS
P-12	WATER HEATER	GRANGER RHEEM-RUDO (ELEC.)	ES85-54-0	-----	85 GAL	-----	-----	SURFACE MOUNT THERMOSTAT	ELECTRIC WATER HEATER 54 KW 208 V, 3 PH
P-12A	WATER HEATER	GRANGER RHEEM-RUDO (ALTERNATE GAS)	HE80-199	-----	80 GAL	-----	-----	SURFACE MOUNT THERMOSTAT	120V CONTROL CKT SEALED COMBUSTION GAS FIRE 199 MBH INPUT
P-13	WATER HEATER (PREHEATER)	GRANGER THERMA-STOR (RECLAM)	TS 100 - 1	-----	120 GAL	-----	-----	-----	6000 WATT ELEMENT WITH STAND
P-14	SEAFOOD & MEAT PREP HAND SINK	JOHN BOOS	PBHS-W-1620KVL	TYPE 300 STAINLESS STEEL	25"x22"	005439 BASKET DRAIN T&S B 0509 KNEE VALVE T&S B 0525 SW BASE	-----	-----	-----
P-15	DELI-BAKERY SINK	JOHN BOOS	3PB2404-2024FL	TYPE 300 STAINLESS STEEL	29"x123"	(2) B-3952 LEVER WASTE DRAIN T&S B 1128 FAUCET (1) T&S B 2278 FREEWASH W/VB	-----	VACUUM BREAKER AND WALL BRACKET	-----
P-16	GREASE TRAP	-----	-----	MINIMUM 1.500 GALLONS	-----	-----	-----	EXTERIOR	RECESSED HEAVY TRAFFIC RATED
P-17	FLOOR DRAIN	ZURN	Z-560	CAST IRON	4"	-----	DEEP SEAL TRAP	-----	-----
P-18	FLOOR DRAIN	ZURN	ZB-610-H W/21000	CAST BRONZE GRATE	12"x12"	-----	DEEP SEAL TRAP	-----	HINGED GRATE WITH SEDIMENT BUCKET
P-19	FLOOR DRAIN	ZURN	ZB-508-HF W/21000	CAST BRONZE GRATE	8"	-----	DEEP SEAL TRAP	-----	HEEL PROOF SECURED GRATE
P-20	WALL CLEANOUT	JOSAM	58890	BRONZE PLUG STAINLESS WALL PLATE	-----	-----	-----	-----	-----
P-21	PRODUCE PREP HAND SINK	JOHN BOOS	PBHS-W-1620-FL	TYPE 300 STAINLESS STEEL	25"x22"	005439 BASKET DRAIN T&S B 1148 FAUCET OPTIONAL 4" WRIST ACTION	-----	WALL BRACKET	-----
P-22	WATER HAMMER ARRESTER	JR SMITH	SERIES 5000	-----	-----	-----	-----	-----	-----
P-23	FLOOR SINK	PLASTIC ODITIES	PFS 300 T	-----	14"x14"	-----	-----	14"x14" W/ 12" ROUN GRATE	SECONDARY STRAINER
P-24	MOP BASIN	REDICO	5896-363606-0020	RUBER GASKET FIBERGLASS	36"x36"	3" GRID DRAIN AND RUBBER GASKET	DEEP SEAL TRAP	VACUUM BREAKER	W/ 24" WALL GUARDS SEE SUPPLIER INFO
P-24A	MOP BASIN	FIAT	T5B-300 SERIES	RUBER GASKET TERRAZZO	36"x36"	3" GRID DRAIN, RUBBER GASKET 830-AA SERVICE FAUCET	DEEP SEAL TRAP	VACUUM BREAKER	10" DEEP W/ 24" WALL GUARDS SEE SUPPLIER INFO
P-25	WATER HEATER	RHEEM-RUDO	EDSP-10	-----	10 GAL	-----	-----	-----	(1) 3000 WATT ELEMENT, 120V, 1PH
P-26	1 COMPARTMENT D/B CHICKEN SINK AND SEAFOOD SINK	JOHN BOOS	1PB184-1018L-FL	TYPE 300 STAINLESS STEEL	24"x41"	B-3952 LEVER WASTE DRAIN T&S B 1128 FAUCET	-----	VACUUM BREAKER AND WALL BRACKET	18" SPLASHGUARD
P-27	2 COMPARTMENT VEGETABLE SINK	JOHN BOOS	2PB244-1024R-FL	TYPE 300 STAINLESS STEEL	30"x77"	B-3952 LEVER WASTE DRAIN T&S B 1128 FAUCET	-----	VACUUM BREAKER AND WALL BRACKET	24" SPLASHGUARD
P-28	DELI/BAKERY HAND SINK	JOHN BOOS	PBHS-W-1620KVL	TYPE 300 STAINLESS STEEL	25"x22"	005439 BASKET DRAIN T&S B 0509 KNEE VALVE T&S B 0525 SW BASE	-----	-----	-----
P-29	ROOF DRAIN	ZURN	Z-100	CAST IRON	4"	-----	-----	-----	CAST IRON DOME
P-30	HOSE BIB	WOODWARD	MODEL 24	POLISHED CHROME	-----	-----	-----	CHROME VACUUM BREAKER	CHROME STANDARD LOOSE KEY
P-31	LOUNGE SINK AND COUNTER	JOHN BOOS	BRC-5024-HWR-FL	16 GAUGE STAINLESS STEEL	50"x24"	005439 BASKET DRAIN T&S B 0325 FAUCET	-----	-----	-----
P-32	EXPANSION TANK	B&G	PTA-12	-----	6.4 GAL	-----	-----	-----	-----
P-32A	EXPANSION TANK	B&G	PTA-5	-----	2.0 GAL	-----	-----	-----	-----
P-32B	EXPANSION TANK	B&G	PTA-20V	-----	6.0 GAL	-----	-----	-----	-----
P-33	EMER. EYEWASH UNIT WITH BRACKET	BRADLEY	S19-220	-----	-----	-----	-----	-----	SEE DETAIL ON SHEET P6.01
P-33A	DECK MOUNTED EYEWASH	GUARDIAN	G1505-TM	-----	-----	-----	-----	-----	PROVIDE THERMOSTATIC MIXING VALVE
P-34	TRAP PRIMER	PRECISION PLUMBING	MPB-500	-----	-----	3/8" TYPE L SOFT TUBING	-----	-----	MOUNTED A MINIMUM 12" AFF ENSURE PRIMER IS MOUNTED IN AN AREA ACCESSIBLE FOR SERVICE
P-35	RECESSED WALL HYDRANT	WOODWARD	B65	BRASS	3/4"	-----	-----	-----	LOOSE KEY FREEZEPROOF, LOCKING COVER

NOTES:
1. THE COLOR FOR ALL WATER CLOSETS, URINALS AND LAVATORIES SHALL BE "WHITE".
2. P-33 EMERGENCY EYE WASH STATION INSTALLED MOUNTED AT 36" AFF. SHOULD HAVE MIXING VALVE TO TEMPER WATER, FLOOR DRAIN NOT REQUIRED.
3. VTR'S SHALL BE A MINIMUM OF 10' FROM ANY FRESH AIR INTAKE, COORDINATE AS REQUIRED WITH MECHANICAL CONTRACTOR AND MECHANICAL ROOF PLAN.

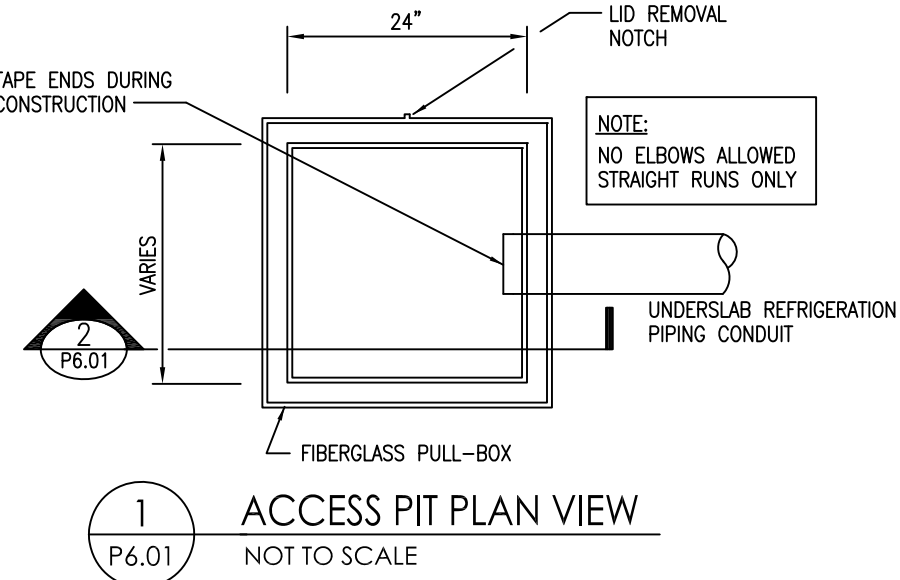
FIXTURE NOTE:
FOR PLUMBING FIXTURES MARKED P-10, P-11, P-14, P-15, P-21 & P-22 THE SINK TUBS SHALL BE FABRICATED WITH 16 GAUGE STAINLESS STEEL & THE DRAIN BOARDS SHALL BE FABRICATED WITH 14 GAUGE STAINLESS STEEL. SEE THE "FOOD LION" SINK SPECIFICATION FOR MORE INFORMATION.

ACCEPTABLE ALTERNATE MANUFACTURERS:

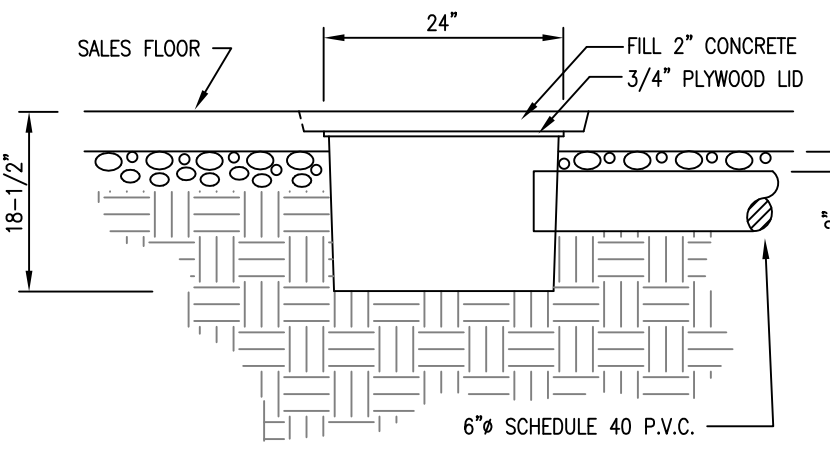
P-1 TOTO CT705EN KOHLER K-4350	P-8 SMITH 2005-DV-PB WADE W-1104-TS7-31-2 JOSAM 30004-7E1-2
P-1A TOTO CT705ELN KOHLER K-4358	P-8A J.R. SMITH D9930 - SYSTEM P-BB J.R. SMITH D9930 - SYSTEM
P-2 TOTO UT447E (0.5 GPF) KOHLER K-4840-ET (0.5 GPF)	P-17 JOSAM 39984 W/67104A WATTS FD-160-F-9 WADE W-1640
P-3 TOTO LT307.4 KOHLER K-2054	P-18 SMITH 2415-B-PB WADE W-2310-1-14 W/2450 JOSAM 37810-20-14-2 W/67104A
P-4 HALSEY TAYLOR WM-16W WADE W-8620-L	P-19 JOSAM 32300-1.88100 SMITH 2120 WATTS FD-320-Y-6 WADE W-1310-1-W/ W-2450
P-5 KOHLER K-8906 WOODFORD MODEL 60	P-20 WATTS CO-590-RD WADE W-8590/ W-8480R
JOSAM 71050-50 WATTS HY420-6	P-23 SIOUX CHIEF 861.3PX
P-6A SMITH 5560 WADE W-8606-HC JOSAM 71050-52-80 WATTS HY420-6	P-29 WATTS RD-300K
P-7 AMERICAN STANDARD 8344-111	

LOCATION & PHONE FOR FIXTURE SUPPLIES:

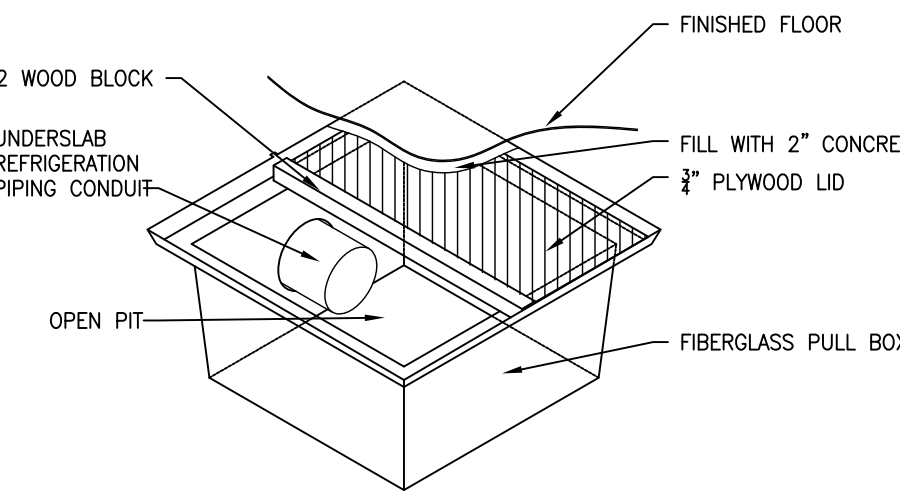
JOHN BOOS	SHELBY, NC	PH:(800) 438-5327
HEFCO, LLC	ROSWELL, GA	PH:(800) 327-1817
GRANGER	CHARLOTTE, NC	PH:(704) 904-6151
JOSAM	RICHMOND, VA	PH:(800) 446-2728
THERMA-STOR	DEC INTERNATIONAL	PH:(800) 533-7533
ABT, INC.	TROUTMAN, NC	PH:(800) 438-6057 OR (704) 525-3043
WATTS	SPINDALE, NC	PH:(800) 338-2581
WADE	CHARLOTTE, NC	PH:(704) 525-3043
B&G	MORTON GROVE, IL	PH:(847) 966-3700



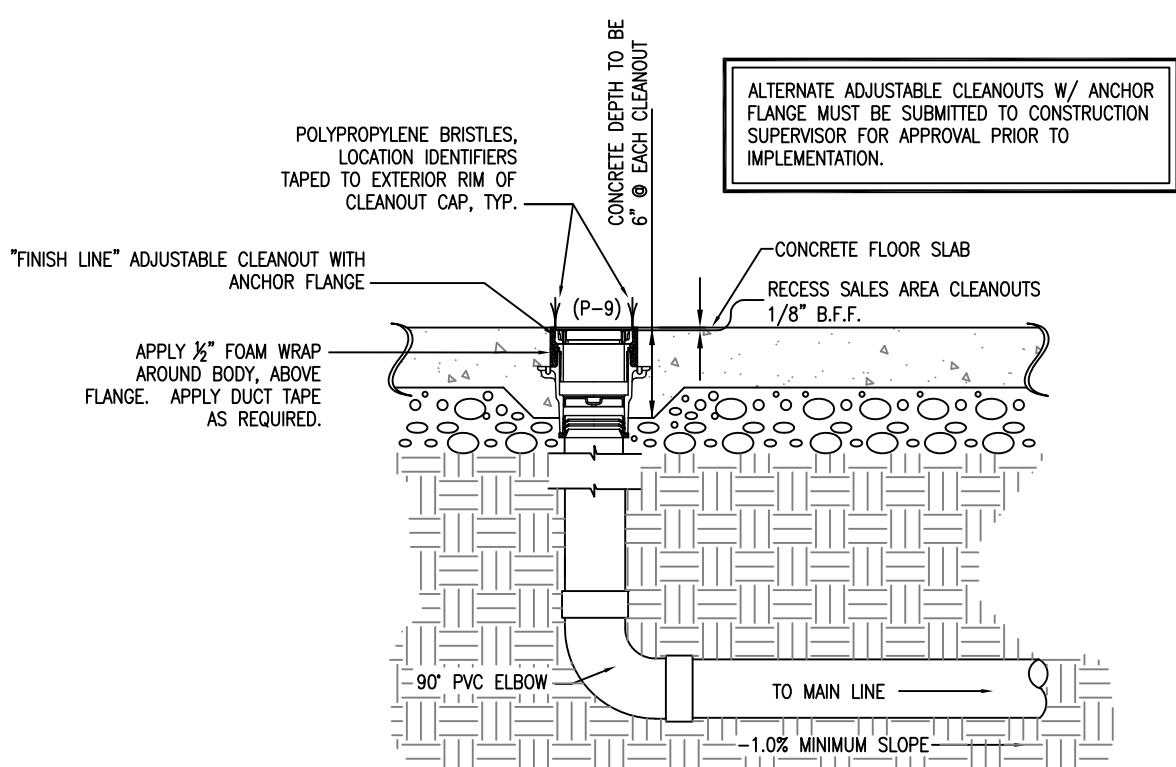
1 ACCESS PIT PLAN VIEW
NOT TO SCALE



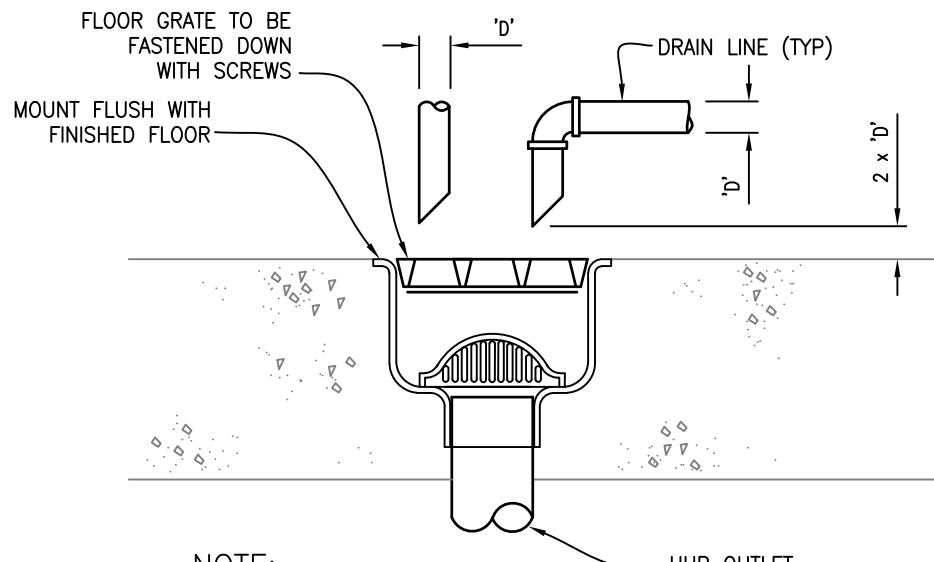
2 SECTION THRU PIT
NOT TO SCALE



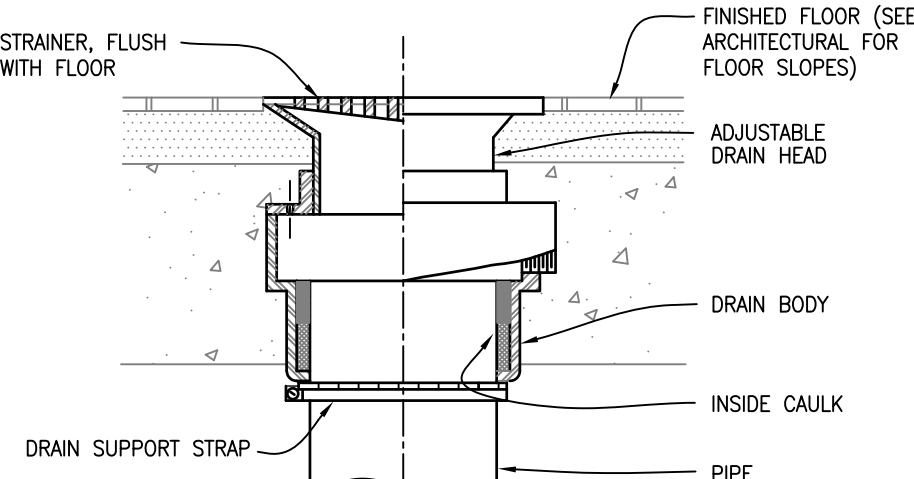
3 PIT ISOMETRIC
NOT TO SCALE



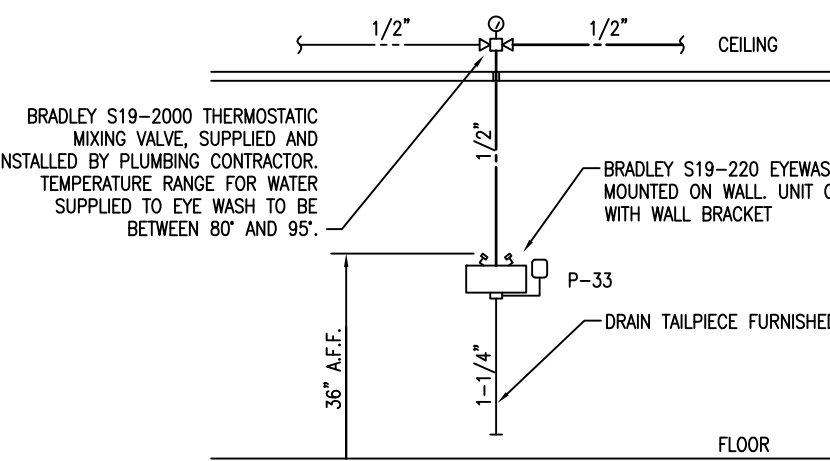
4 SALES AREA CLEANOUT SECTION
NOT TO SCALE



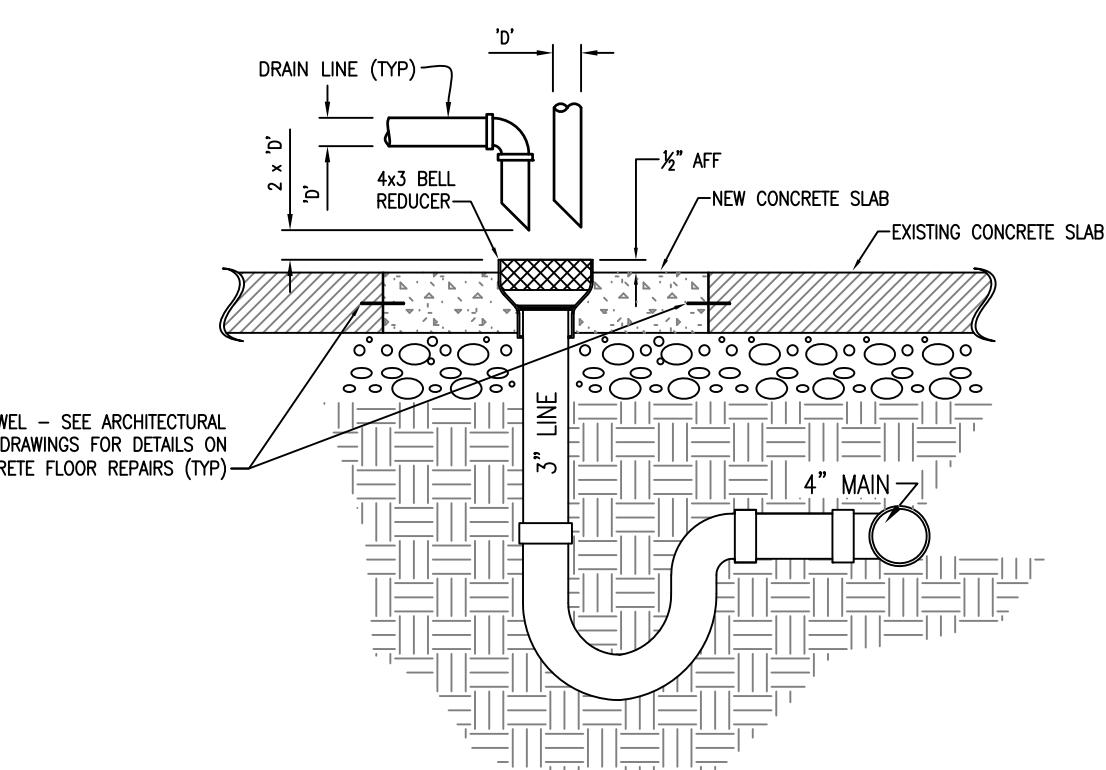
5 FLOOR SINK DETAIL
NOT TO SCALE



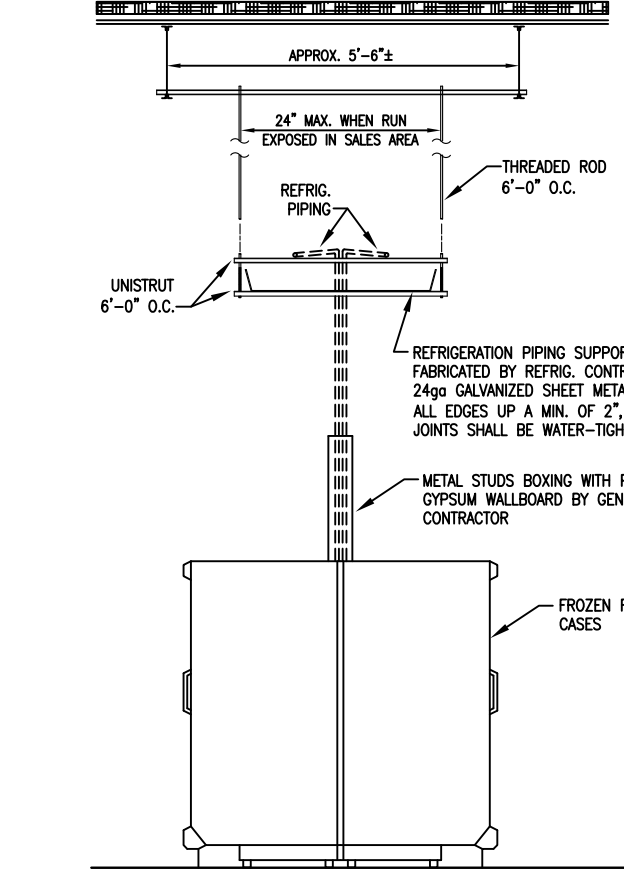
6 FLOOR DRAIN DETAIL
NOT TO SCALE



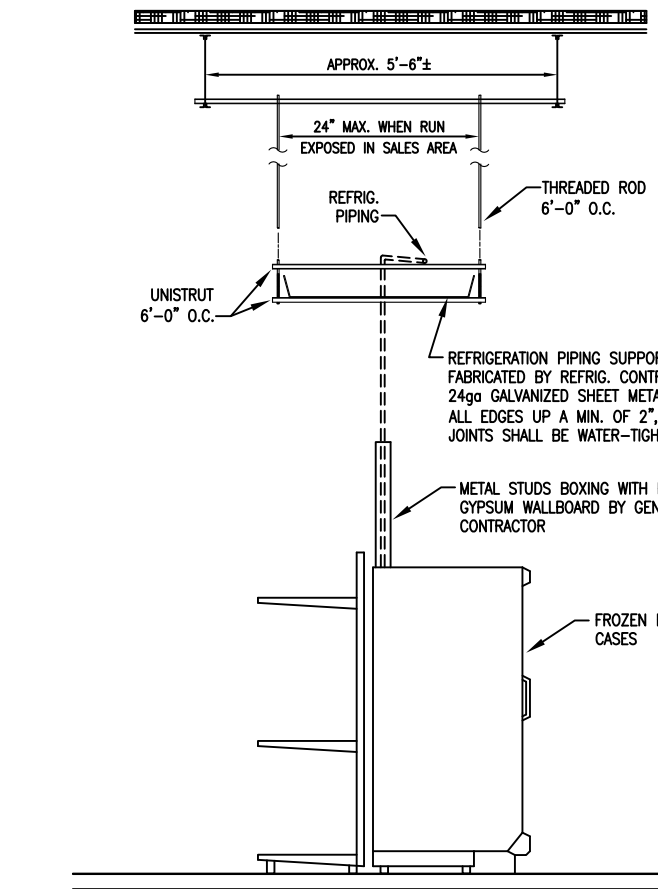
7 EYEWASH DETAIL
NOT TO SCALE



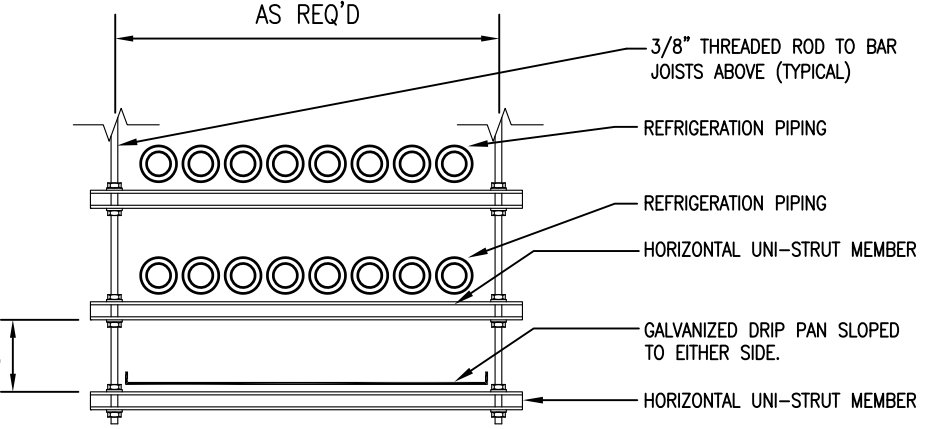
8 HUB DRAIN INSTALLATION DETAIL
NOT TO SCALE



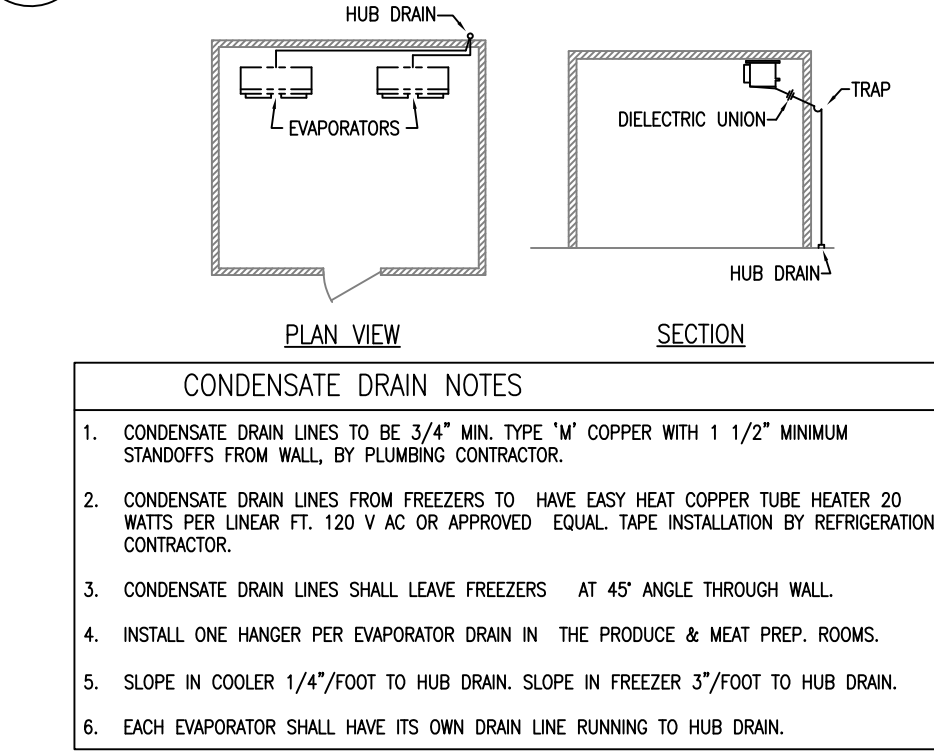
9 OVERHEAD REFRIGERATION PIPING DETAIL
NOT TO SCALE



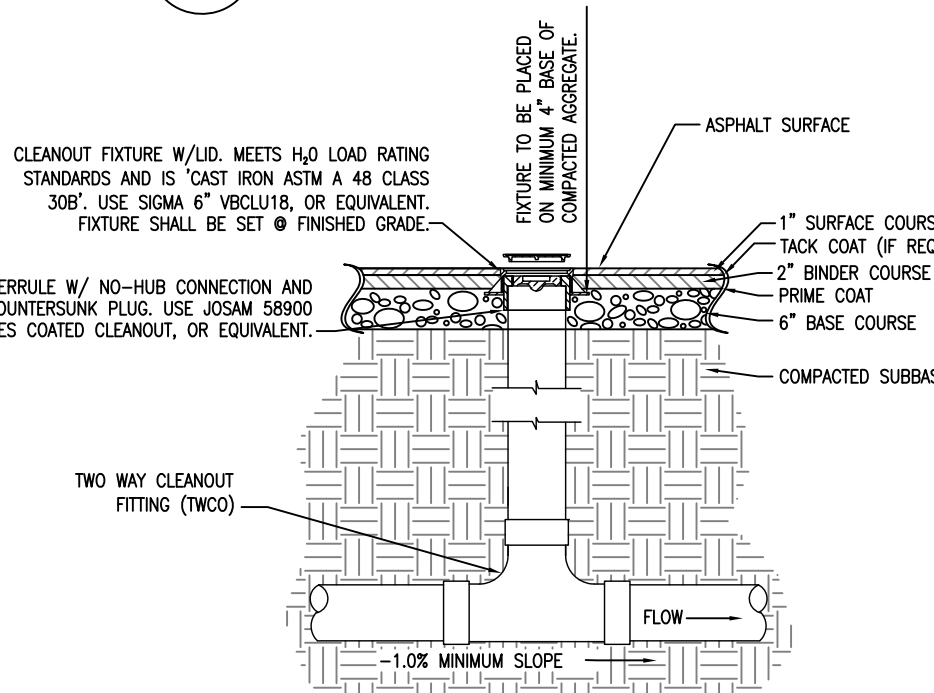
10 OVERHEAD REFRIGERATION PIPING DETAIL
NOT TO SCALE



11 OVERHEAD REFRIGERATION DRIP PAN DETAIL
NOT TO SCALE



12 TYPICAL CONDENSATE DRAINS
NOT TO SCALE



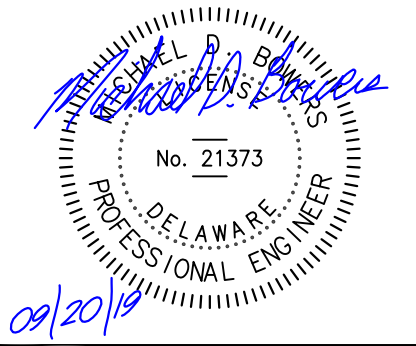
13 TWO WAY CLEANOUT SECTION IN ASPHALT
NOT TO SCALE



Yates-Chreitzberg-Hughes
Architects, Corp.
Architecture
Interior Design
Land Planning
Project Management

BOWERS CONSULTING, PA
1620 South MLK, Jr. Avenue - Suite 106
Salisbury, NC 28144
T: 704-630-0075 F: 704-630-0051
DE COA: 4390

Professional Seals



Interior Alteration For:
FOOD LION
2110 Executive Drive, Salisbury, NC 28145/ Ph: 704.632.8250
Store No. 1458
30214 Sussex Hwy
Laurel, DE 19956

OWNERSHIP OF INSTRUMENTS OF SERVICE:

All reports, specifications, plans, computer files, field data, notes, and other documents and instruments of service shall remain the property of the Design Professional. The Design Professional shall retain all common law, statutory and other reserved rights, including the copyright therein.

© Copyright 2019

Project No.: 1458FLMK20

File Name: 1458 P6.01_00.dwg

Date: 09-20-19

Revisions:

PLUMBING SCHEDULE

Plumbing

P6.01

YCH Commission Number

19018.00

7035 Northwinds Dr NW

Concord, NC 28027

704.788.2000

ycharch.com